

4599 JOSEPH ELI DRIVE

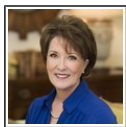
SNELLVILLE, GA 30039 | MLS #: 6636489

\$289,900 | 4 BEDS | 3 BATHROOMS | 1 HALF BATHROOMS | 3501 SQUARE FEET



View Online: <http://ahtours.com/90032>

Gorgeous and like-new Craftsman-style home in popular Rutledge Estates! A stunning two-story foyer with hardwood floors welcomes you into this large, sparkling clean home. Just off the foyer is a formal living room, which could also be an office or flex space. A nice formal dining room with tray ceiling opens to a fantastic kitchen with stainless appliances and a breakfast bar. A cozy breakfast nook overlooks the large backyard and patio, and the open floor plan leads you right into a spacious great room with a fireplace and cathedral ceiling. The HUGE master suite on the main floor features an over-sized bedroom with a tray ceiling, a sitting or exercise area, plus large master bath with double sinks, and a separate tub/shower. Upstairs offers a nice loft/recreation area, three additional spacious bedrooms and two more full baths. This home sits on a beautiful corner lot, just a half mile from Lenora Park, a 178 acre park featuring a fishing lake, pool with water slides, playground,...



AGENT INFORMATION

Dawn Hobby

M: 229-347-5517

dawn.hobby@harrynorman.com

dawnhobbyweb.harrynorman.com

Harry Norman Realtors



PHOTOGRAPHY BY:

Advantage Home Tours

www.advantagehometours.com/