

# 2687 BUFORD HIGHWAY

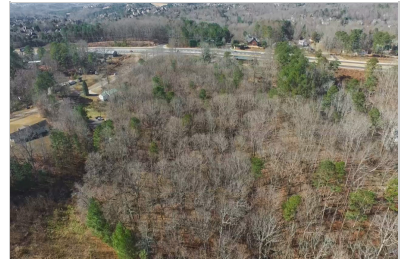
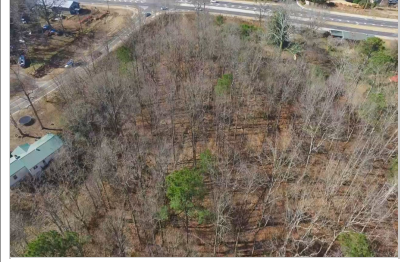
CUMMING, GA 30041 | MLS #: 6096613

0 BEDS | 0 BATHROOMS | 0 SQUARE FEET



View Online: <http://ahtours.com/83812>

7.009 Acres on East Side of Buford Hwy/Hwy 20 with approximately 313' of frontage and the Corner of Pruitt Rd. with approximately 246' of frontage. This Tract is part of an assemblage making up approximately 11 acres. Possible usage includes Commercial, Multi-family, Town-homes, Apartments, etc. Conveniently located between Cumming and Buford near Schools, the Chattahoochee River, Commercial Businesses and Established Residential Communities. All public utilities are available with Public Sewer access available via Pruitt Rd., Pruitt Ln. to Twin Branches Pump Station.



## AGENT INFORMATION

**Michael Hill**

M: 770-630-3971

[michael@michaelhillrealty.com](mailto:michael@michaelhillrealty.com)

[www.michaelhillrealty.com](http://www.michaelhillrealty.com)

**Hill & Associates Realty**



## PHOTOGRAPHY BY:

Advantage Home Tours

[www.advantagehometours.com/](http://www.advantagehometours.com/)